

Resolution 2026-R-47

***A Resolution authorizing the Lease of
Two New Way Cobra 20 Yd Rear Loaders and one 2026 Freightliner M2***

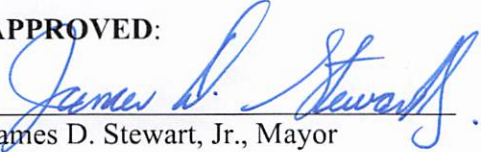
BE IT HEREBY RESOLVED by the City Council of the City of Irondale, Alabama, in regular meeting duly assembled, a quorum being present, that Mayor James D. Stewart, Jr., or his designee, is authorized to lease two New Way Cobra 20 Yd Rear Loaders in an amount not to exceed Two Hundred Thirty Thousand Seven Hundred Sixty-Seven and 00/100 Dollars (\$230,767.00) per truck and one 2026 Freightliner M2 with a Ramer 3500 Loader in an amount not to exceed Two Hundred Forty Two Thousand Seven Hundred Sixty-Seven and 67/100 Dollars (\$242,767.67) for a total cost for all three pieces of equipment of Seven Hundred Four Thousand Three Hundred One and 67/100 Dollars (\$704,301.67) plus any financing costs as well as to execute any other documents necessary to accomplish such purchase.

ADOPTED AND APPROVED: This 17th day of February, 2026.



David Spivey, City Council President

APPROVED:



James D. Stewart, Jr., Mayor

ATTESTED:



Leigh Ann Allison, City Clerk

CERTIFICATION

I, Leigh Ann Allison, the City Clerk of the City of Irondale, Alabama, hereby certify the above to be a true and correct copy of a resolution adopted by the City Council of the City of Irondale at its regular meeting held on February 17, 2026, as the same appears in the minutes of record of said meeting.



Leigh Ann Allison, City Clerk



QUOTE

QUOTE # SECQ9485
 DATE Jan 22, 2026
 CONTRACT CUSTOMER ID # 114891
 CONTRACT # 110223-NWY

To: Frank Pennington
 City of Irondale (AL)
 P.O. Box 19766
 Irondale, AL 35210
 United States

Sales Contact: Kyle Cherry
 205-223-5114
 kyle@secequip.com

Phone: (205) 951-1424
 fpennington@cityofirondaleal.gov

QUOTE STATUS	SHIPPING TERMS	DELIVERY IN DAYS	PAYMENT TERMS
Sourcewell	Customer Location		Net Delivery

QTY	DESCRIPTION
1	New Way Cobra 20 Yd Rear Loader
1	Safety Shutdown Curbside, Driver Buzzer Curbside, Interlock on access door, Induction Hardened Slide & Sweep Rods, Slide Cylinder Covers, Access door 30x30, One Year Body Warranty, One Year Hydraulics Warranty, Two Year Cylinder Warranty
1	Upper Body Floor 1/4" 50k from 10GA, 80K
1	Hopper Floor and Back 3/8" 50k from 1/4" 50K and back 1/4" 100K
1	Hopper Floor Back Extension (Limits fall back into hopper)
1	Full Body Weld Inside vs. Stitched
1	Bolt on Reeveer Plate & Future Cable Guide Supports (No Cable Guide)
1	Extra Valve Section With EXTENDED Handle/pivot RIGHT (rear valve for future cart tipper installation)
1	Extra Valve Section With EXTENDED Handle/pivot LEFT (rear valve for future cart tipper installation)
1	Extra Valve Section & Handle (rear valve for future container handling option)
1	Street Side Linkage to Operate Tipper Valve Section
2	Hydraulic Tubing To Tailgate Side For Future Tipper Install
1	Acrylic Urethane Enamel White
1	Prime Inside Body
1	LED Work Lights (2) Mounted Inside Upper Tailgate Shining In Hopper

QTY**DESCRIPTION**

1	LED Mid Body Back-Up Lights
1	Strobe Light (Upper Tailgate - Center)
1	Strobe Light Package (Integrated Strobe System) ((2) round lights mounted upper tailgate)
1	Strobe Light Package (Integrated Strobe System) ((2) round lights mounted lower tailgate)
1	Strobe Light Package (Integrated Strobe System) ((2) round lights mounted upper front bulkhead)
1	7.0" Color Flat Screen w/Audio
1	Remote Grease Zerk Tailgate & Cylinder Hinge Pins
1	Safety Shutdown & Driver Alert Buzzer Street Side
1	In Cab Air Controls For Tailgate and Eject
1	Hot shift PTO with overspeed and Pack on Go
1	New Freightliner M2 Chassis
1	Freight
1	Mounting of Two Tippers
2	Barker Rotary Tipper 39"
1	Forward and Rear Camera Recorder

This quote does not include any federal, state, or local taxes.

* In stock equipment are subject to prior sale. *

This Quote is valid for 30 Days.

TOTAL**\$230,767.00**

BIRMINGHAM OFFICE
2800 Powell Avenue
Birmingham, AL 35233
Ph: (205) 324-3104
Fax: (205) 324-2679

MOBILE OFFICE
2025 West I-65 Service Road North
Mobile, AL 36618
Ph: (251) 631-3766
Fax: (251) 631-3768

SHELBYVILLE OFFICE
3196 Highway 231 North
Shelbyville, TN 37160
Ph: (615) 696-7066
Fax: (615) 413-5323

STONECREST OFFICE
2601 South Stone Mountain Lithonia Road
Stonecrest, Georgia 30058
Ph: (706) 685-6900
Fax: (706) 609-3491

STATESBORO GA OFFICE
207 Hal Averitt Blvd.
Statesboro, Georgia 30458
(912) 549-0005





National Auto Fleet Group

A Division of Chevrolet of Watsonville

490 Auto Center Drive, Watsonville, CA 95076
(855) 289-6572 | (855) BUY-NJPA | (831) 480-8497
Fleet@NationalAutoFleetGroup.com

Frank Pennington

City of Irondale (AL)
P.O. Box 19766
Irondale, AL 35210
United States



2/10/2026

Dear Frank Pennington

National Auto Fleet Group is pleased to quote the following vehicle(s) for your consideration:

1 ea 2026 Freightliner M2 With a Ramer 3500 Loader

Which will be personally delivered to your department yard by Sansom Equipment Company's representative; **Kyle Cherry**

Unit Cost	\$242,767.67
Tax	
Total	242,767.67

This vehicle(s) is available under the **Sourcewell (Formerly Known as NJPA) Contract 032824-NAF**. Please reference this Bid Number on all Purchase Orders.

Thank you in advance for your consideration. Should you have any questions, please do not hesitate to call.

Sincerely,

Jesse Cooper
National Fleet Manager
Office (855) 289-6572
Fax (831) 480-8497

-
- | | | |
|---|----|---|
| 1 | ea | Ramer 3500 Scowbody, loader, Stand up Manual Lever Controls, Slide Boom, Continuous Rotating Bucket, Single Pump, 18 Foot Trash Body, Winged up Sides, standard LED Lights, Strobes in Rear Post, Painted Black |
|---|----|---|
-
- | | | |
|---|----|-----------------------|
| 1 | ea | 2026 Freightliner 106 |
|---|----|-----------------------|
-
- | | | |
|---|----|---------|
| 1 | ea | Freight |
|---|----|---------|

Quote valid for 30 days.



**HEAVY DUTY LOADERS
AND TRAILERS**

Ramer

520 Paulk Road □ Ramer, AL 36069

334-562-9331 Fax 334-562-3885 email: ramermfg@mon-cre.net

SAFE ■ EFFICIENT ■ RELIABLE ■ FAST



HEAVY DUTY LOADERS, BODIES AND TRAILERS

THE PERFECT SYSTEM FOR A CLEAN COMMUNITY

2500 ■ 3500 ■ 4500 MODELS

Ramer Shuttle Loader Featuring Behind the Cab Bucket Storage



Ramer Shuttle Loader system allows the loader to remain on the job loading other trailers while the loaded trailer is "shuttled" by another truck to the dump site.

The Shuttle loader can be equipped with either a seat mount or an enclosed cab with sliding side windows. Air conditioning and heat are also available with the cab unit.



2500 ■ 3500 ■ 4500 MODELS

Ramer Single Unit Loader Featuring Stand-Up Control



DUAL STAND-UP OPERATOR CONTROLS WITH WALK-THRU

Ramer Single unit allows for a one man operation.

This single unit is versatile and can easily work any alley or street in any size city.

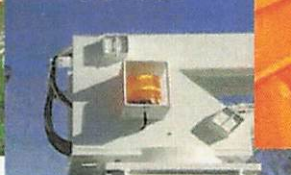
Each unit can be equipped with options to best fit the trash needs of any city.

Several options are:

Seat Mount



Strobes



Joystick Controls



Scowtail



Dump Body



Barn Doors

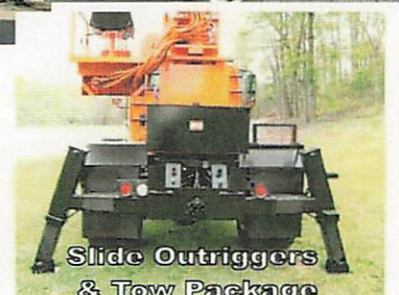


Twin Hoists

Back Doors with
Three Hinges



Slide Outriggers
& Tow Package



Ramer - Miles Trailers

**THERE IS NO BETTER OR TOUGHER TRAILER BUILT
COMPARE BEFORE YOU BUY!**



**MILES
HEAVY DUTY
TRAILERS ARE
UNSURPASSED IN
CONSTRUCTION QUALITY**

SPECIAL FEATURES INCLUDE:

- ★ Heavy Duty I-Beam Frame
- ★ Electric or Air Brakes
- ★ Rear Scow or Heavy Duty Doors
- ★ 30,000 Pound Dump Capacity
- ★ Hydraulic Operated Jack Stand
- ★ 45° Dump Angle
- ★ Straight 4 foot sides - - or winged-up sides 42" in front of trailer sloping up to 60" in rear of trailer
- ★ 10,000 to 22,500 lb. Axles
- ★ Hydraulic or Electric Tarp Systems
- ★ Twin Telescoping Dump Cylinders
- ★ Rear Strobe Lights
- ★ Rear Stop Tail Lights
- ★ LED Lights
- ★ All Steel Construction



Ramer

**EXCELLENCE IN
WORKMANSHIP
FOR OVER 35 YEARS**

DEALER:

SANSOM EQUIPMENT CO., INC.
P.O. BOX 360041
BIRMINGHAM, AL 35236
PHONE NO.: (800)501-0757

These specifications are subject to change without notification.