



ADVERTISEMENT FOR BIDS

Sealed proposals for **I-20 Material Bid** will be received by the City of Irondale, Alabama (Owner) in the Council Chambers at the City Hall in Irondale, Alabama at 101 20th Street South, Irondale, Alabama, until **2:30 p.m.**, the prevailing time on **March 31, 2025** or by mailing to 101 20th Street South, Irondale, Alabama 35210 at which time and place they will be publicly opened and read. The bid is comprised of the following principal items and approximate quantities:

Various Materials for the I-20 Line Replacement.

Specifications may be inspected and obtained at the Irondale Water Department. All Bidders must be responsible, meeting the criteria and requirements set forth in the specification documents. Prequalification of Bidders is not required.

This project is governed by competitive bid laws as contained in Title 41 of the Alabama Code. Bidders should be familiar with this code.

The Owner reserves the right to reject any or all proposals and to waive any informalities. No Bidder may withdraw his bid within sixty days from the date set for receiving of the same.

This project is governed by the applicable bid laws and practices of the state of Alabama.

By: Leigh Ann Allison

Title: City Clerk

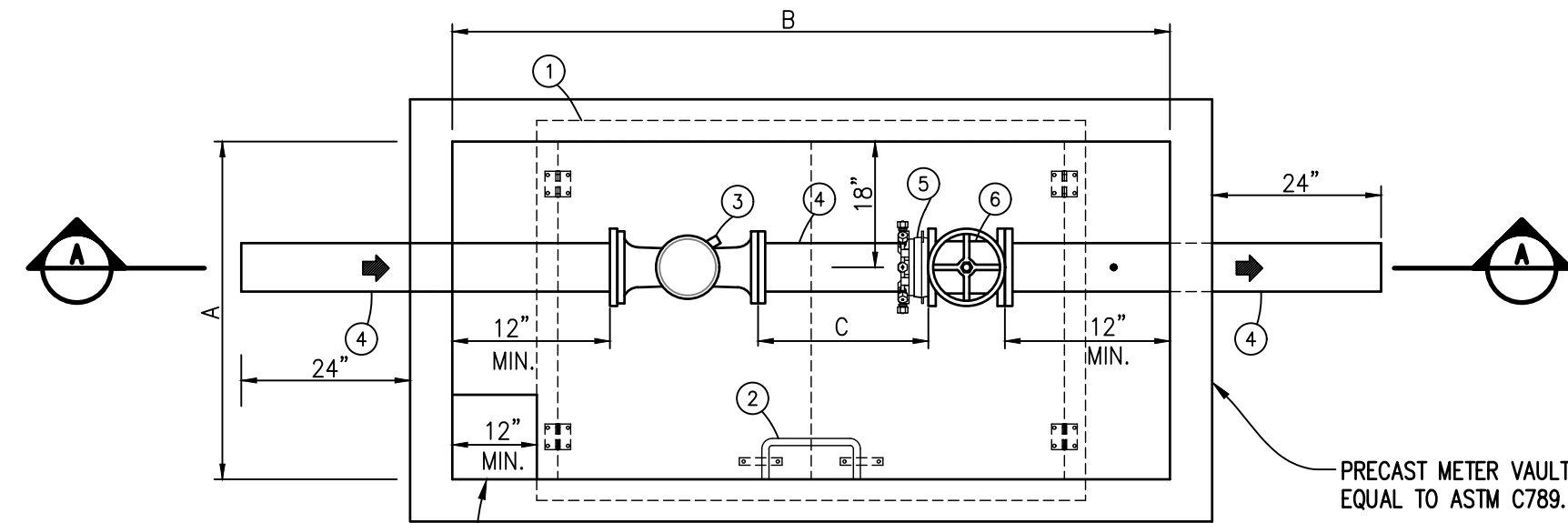
IRONDALE I-20 CROSSING AT EXIT 133

ITEM #	DESCRIPTION	QUANTITY	UNIT PRICE	TOTAL	DELIVERY LEAD TIME
1.	12" D.I.MJ 22.5 Degree Bend	6			
2.	12" D.I.MJ Sleeve (Long)	6			
3.	12" D.I.MJ 45 Degree Bend	8			
4.	12"x12" D.I.MJ Tee	6			
5.	12"x6" D.I. Swivel Tee	4			
6.	12" D.I.MJ Plug	2			
7.	12" D.I. MJ R.S. AWWA C-515 Gate Valves	8			
8.	6" D.I. MJ R.S. AWWA C-515 Gate Valves	4			
9.	Cast Iron Valve Box and Lid Marked "WATER" (24"-30" Depth)	12			
10.	Precast Circular 18" Concrete Valve Donut	12			
11.	6" Fire Hydrant (4' Bury) (5.25" barrel) - M&H with Storz.	2			
12.	6" D.I. Anchor Coupling Swivel x Solid (24" Long)	4			
13.	6" D.I. Anchor Coupling Swivel x Solid (13" Long)	4			
14.	12" D.I. Anchor Coupling Swivel x Solid (13" Long)	12			
15.	12" D.I. Pipe Megalugs w/ Glands, Bolts, Gaskets	52			
16.	12" D.I. MJ Gasket and Bolt Pack	24			
17.	6" D.I. MJ Gasket and Bolt Pack	12			
18.	Casing Spacers for 12" D.I. and 18" Casing	132			
19.	End Seal for 18" Casing and 12" D.I. Pipe	2			
20.	Concrete Waterline Markers	12			
21.	8" Meter Vault (See attached Exhibit)	1			

TOTAL _____

Notes:

1. Casing spacers are based on 20' pipe lengths. If the pipe lengths supplied are less than 20', additional spacers will be required at the same lead time (3 spacers are required per joint).
2. Casing spacers and end seals shall be Cascade or CCI. Spacers shall have bottom runners only sized for 12" DI in 17.25" ID steel casing.
3. Gate valves shall be M&H.



12"x12" SUMP IN FLOOR WITH HOLE
CORED FOR 6" DRAIN PIPE.

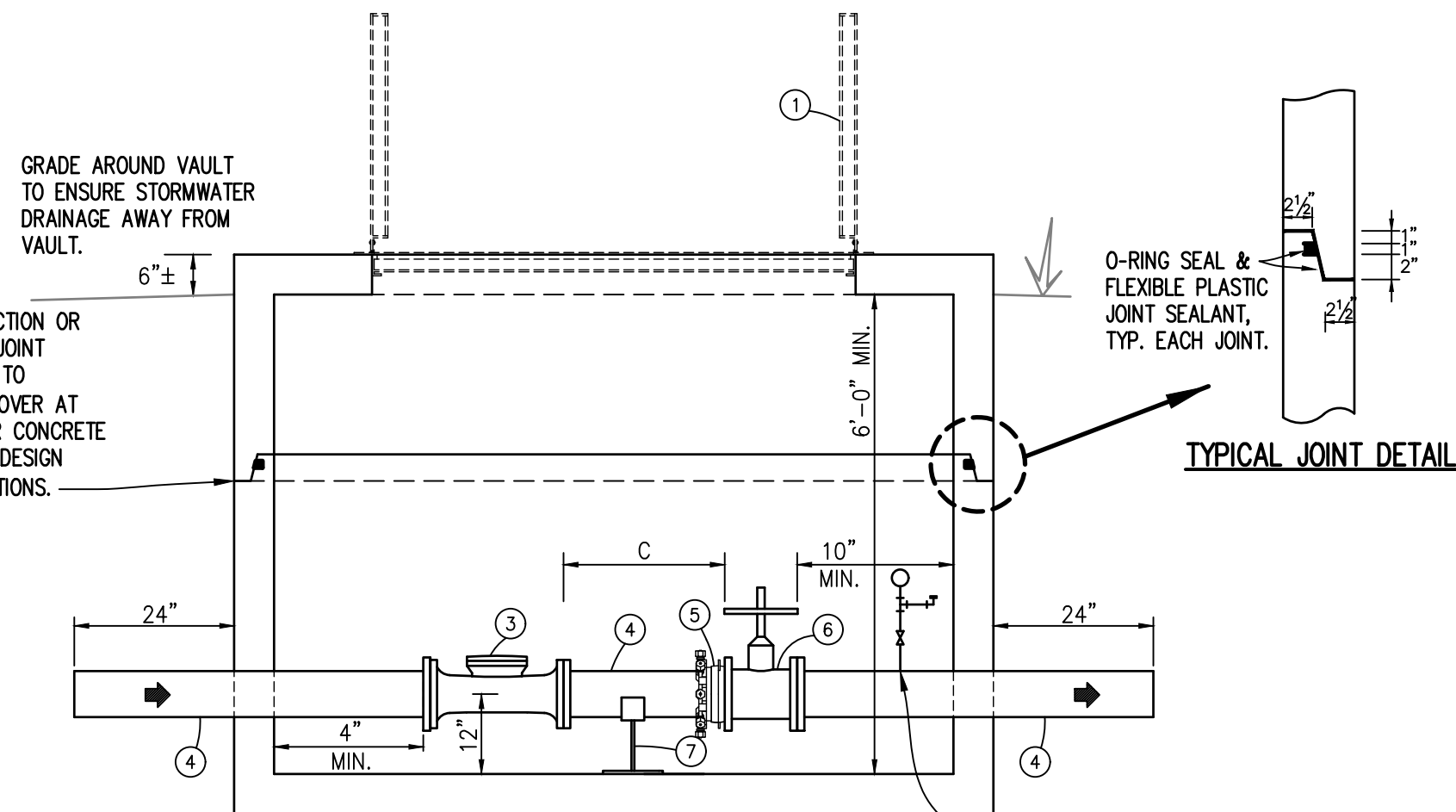
PLAN

	A	B	C
3" METER	4'-0" MIN.	6'-6" MIN.	9" MIN.
4" METER	4'-0" MIN.	7'-0" MIN.	1'-0" MIN.
8" METER	6'-0" MIN.	8'-0" MIN.	3'-0" MIN.

NOTE: TORUSEAL FLANGE
GASKETS ONLY

ALL PIPING, VALVES, FITTINGS,
AND APPURTENANCES SHALL
HAVE A WORKING PRESSURE
RATING OF 250 PSI OR GREATER

IF JOINT REQUIRED FOR CONSTRUCTION OR
SHIPPING REASONS, COORDINATE JOINT
LOCATION PRIOR TO FABRICATION TO
PROVIDE 6" MINIMUM CONCRETE COVER AT
PIPE OPENINGS. PROVIDE GREATER CONCRETE
COVER IF REQUIRED BY PRECAST DESIGN
STANDARDS AND/OR FIELD CONDITIONS.



1" IP TAP WITH 3" S.S. NIPPLE, S.S. VALVE,
3" S.S. NIPPLE, S.S. TEE, LIQUID FILLED
GAUGE RATED FOR 200 PSI, 3" NIPPLE, S.S.
90° BEND, AND S.S. PLUG. (ALL 1" FITTINGS)

SECTION A-A

MATERIAL LIST

- ① 6'x4' PREFABRICATED DOUBLE LEAF ALUMINUM "LOCK OPEN" ACCESS HATCH, WITH PAD-LOCKABLE LATCH, ALL HARDWARE TO BE S.S. HATCH SHALL HAVE 300 PSF RATING. HATCH TO BE S-SERIES BY HALLIDAY PRODUCTS OR EQUAL.
- ② LITTLE GIANT LADDER MODEL M17 2.0 WITH LEG LEVELERS
- ③ 8" STAINLESS STEEL MASTER OCTAVE WITH 4/20 MODULE
- ④ DI PIPE, FLG x PE, LENGTH AS REQ'D, SHOP PRIMED
- ⑤ FLANGE ADAPTER, STAR 3200 SERIES W/DIP MEGA-LUGS
- ⑥ GATE VALVE, M&H
- ⑦ PIPE SUPPORT, B-LINE B3088 STAND AND B3095 SUPPORT

3", 4", & 8" METER VAULT